



202/9 Moore Street Sutherland NSW

2 2 1

Striking boutique building of only 31 apartments designed by acclaimed Enviro Studio architects.

Light filled bedrooms with built-in wardrobes, chic ensuite to main

Gourmet kitchen designed to maximise space with built-in cabinetry, modern European appliances and gas cooktop

Reverse cycle air conditioning

Beautiful park like grounds

Landscaped common rooftop terrace with BBQ facilities

Car space with secured entry and storage cage

Moments to Sutherland station, shops and amenities

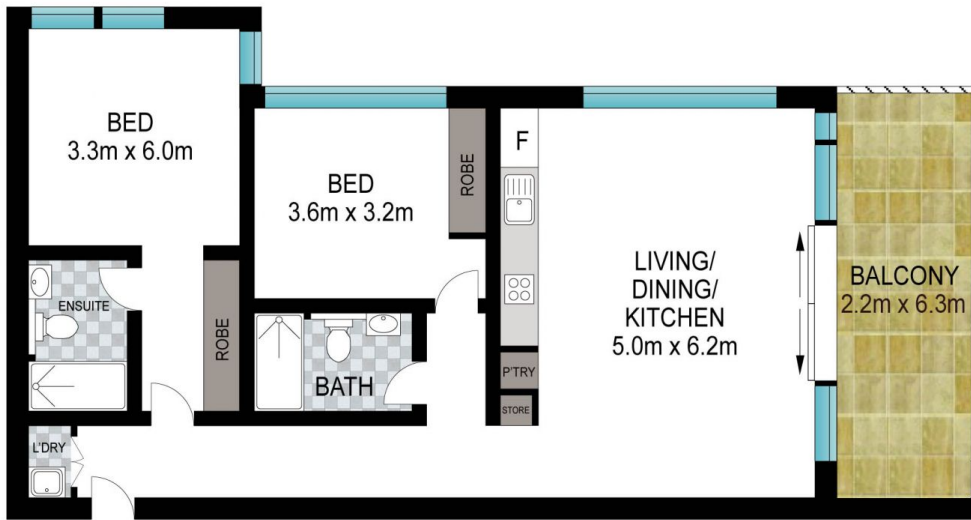
Type : Apartment
Price : \$800,000 - \$850,000
Building Size : 106 sqm
Land Size : 113 sqm
View : <https://www.singerresidential.com.au/8192935>



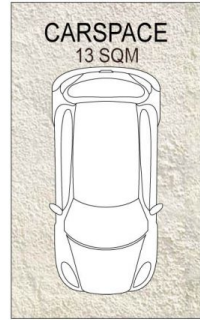
Joshua Singer
02 9528 8738



Trisha Singer
0405143152



STORAGE
4 SQM



Scale in metres. Indicative only. Dimensions are approximate. All information contained herein is gathered from sources we believe to be reliable. However, we cannot guarantee its accuracy and interested persons should rely on their own enquiries.

202/9 Moore Street, Sutherland