

22/331-335 President Avenue Gymea NSW

2 1 1

Note: Access via Chapman Street.

Situated on the first floor of a well-maintained complex this apartment is the perfect combination of low maintenance living and ultimate convenience.

Positioned at the rear of the complex away from the main road, the property features an open plan kitchen/living and dining area flowing out to a large sunny balcony ideal for entertaining.

Key features:

- No common walls
- Two bedrooms, both with built in robes and plantation shutters
- Spacious open plan living/dining area with A/C and floating floorboards

**Price** : \$ 760,000

**Land Size** : 96 sqm

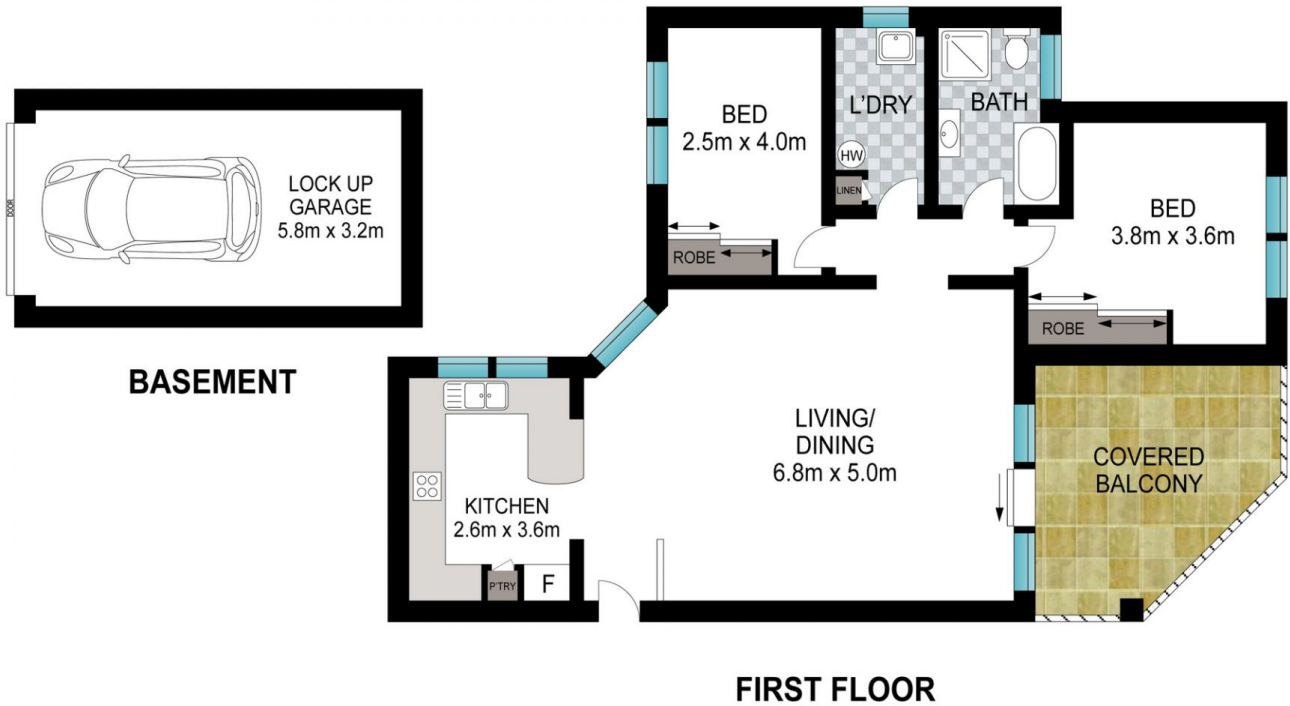
**View** : <https://www.singerresidential.com.au/7910525>



**Joel Bethell**  
02 9528 8738



**Joshua Singer**  
02 9528 8738



INT: 84 m<sup>2</sup>  
EXT: 12 m<sup>2</sup>

Scale in metres. Indicative only. Dimensions are approximate. All information contained herein is gathered from sources we believe to be reliable. However, we cannot guarantee its accuracy and interested persons should rely on their own enquiries.

22/331 President Avenue, Gymea