



6/147-151 President Avenue Miranda NSW

3 2 2

North facing courtyard

Currently Rented for \$950 per week

To view this property. Please park in Norfolk Pl, Miranda

This boutique development offers modern luxury living. Each abode adopts a modern terrace style design with open-plan living areas which extend seamlessly to the private terrace courtyards and beautiful rear gardens that take full advantage of the sunny north-facing aspect.

Convenience at its best with internally accessible double secure side-by-side garage and storage/ 2nd living room. Added security includes a video intercom system and lifts access from the basement level.

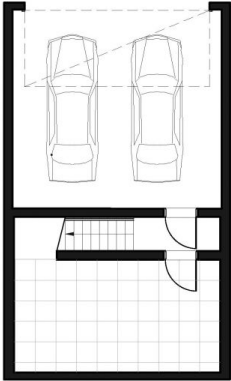
Price : \$1,050,000 - \$1,100,000
Building Size : 226 sqm
Land Size : 144 sqm
View : <https://www.singerresidential.com.au/7901298>



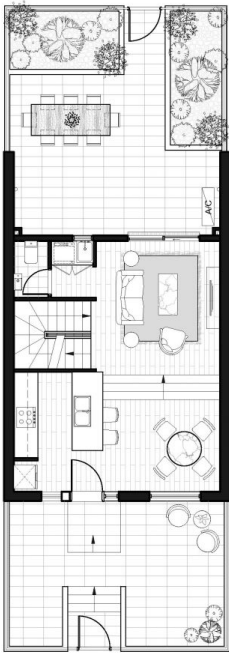
Joshua Singer
02 9528 8738



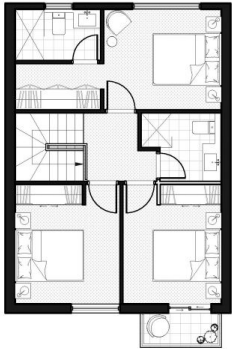
Joel Bethell
02 9528 8738



BASEMENT



GROUND FLOOR



FIRST FLOOR



147-151 President Avenue, Miranda

Unit 3 & 6

Bedroom 3
Bathroom 2.5
Car Space 2

Unit	Basement	Internal Area	External Area	Total
3	65sqm	85sqm	65sqm	220sqm
6	61sqm	89sqm	65sqm	220sqm

Scale 1:100 @A3

Note:
Balconies and external area vary throughout Unit Types. Unit(s) specified refer to internal layout only. Balcony size and type are to be clarified by agent. All information and images are intended as a general introduction to the project only and do not form an offer, guarantee or contract. All individual unit specifications are to be provided during contract of sale.