



56F/5-29 Wandella Road Miranda NSW

2 **1** **1**

Nestled in the heart of Miranda, boasting a prime location within walking distance to Westfield, Schools, and Miranda train station, this residence offers unparalleled convenience and a vibrant lifestyle.

Building Size : 101 sqm
View : <https://www.singerresidential.com.au/7868204>

Key Features

- Fully integrated Dishwasher
- Fully renovated kitchen with natural light
- New flooring
- Indoor heated pool with sauna
- Outdoor pool and BBQ areas
- 10 min drive to Cronulla beach and waterways
- North-East facing

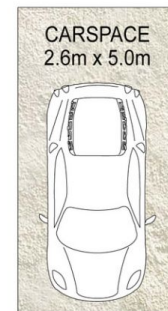
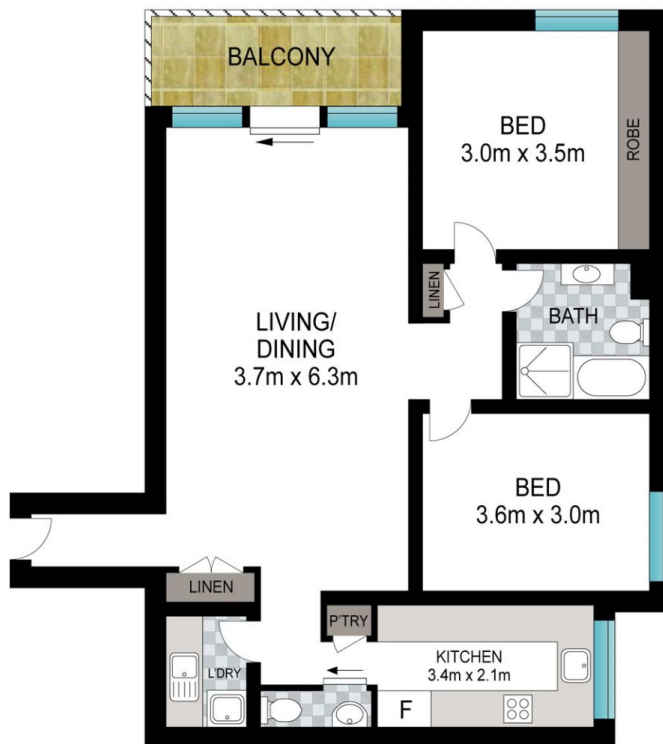


Joshua Singer
02 9528 8738



Joel Bethell
02 9528 8738

Scenic Views: Relish breathtaking views of the CBD skyline



INT: 82 m²
EXT: 5 m²



Scale in metres. Indicative only. Dimensions are approximate. All information contained herein is gathered from sources we believe to be reliable. However, we cannot guarantee its accuracy and interested persons should rely on their own enquiries.

56F/5-29 Wandella Road, Miranda