



20/108-110 Kiora Road Miranda NSW

2 1 1

Centrally located in the heart Miranda, this freshly renovated apartment is perfect for those looking for a relaxed, low maintenance approach to living, with everything needed right on your doorstep. It is peacefully set to the rear of a well-maintained security complex & presents an excellent entry level opportunity or investment.

- Combined lounge & dining room flows onto balcony overlooking gardens
- Kitchen, with newly renovated butler's pantry
- Stylishly renovated bathroom with shower over bath
- Split system air conditioning
- 2 generous bedrooms both with built in robes & ceiling fans
- Only 1 common wall
- Pet friendly complex
- Lock up garage with internal access from basement

Price : \$ 698,000

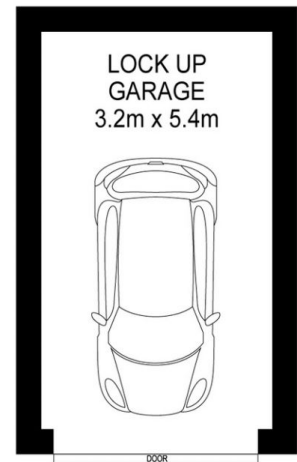
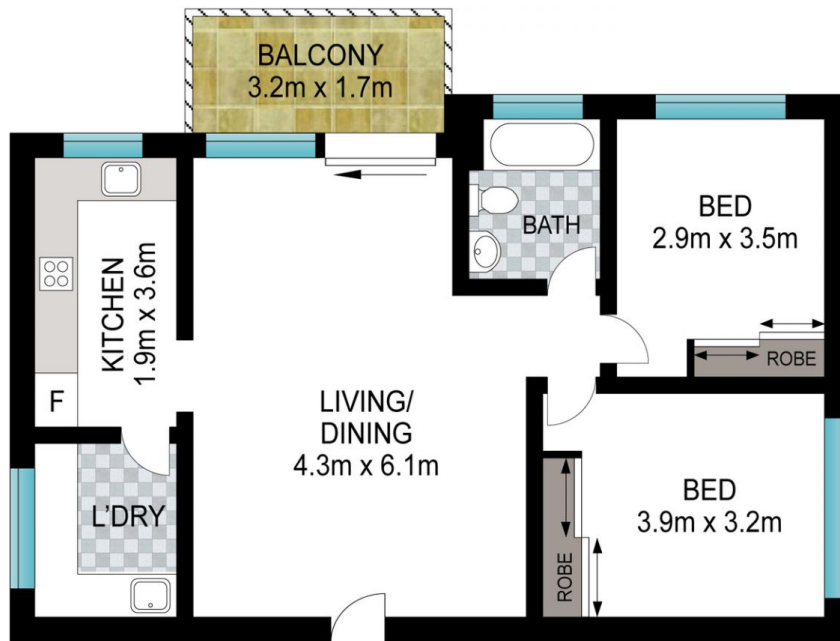
View : <https://www.singerresidential.com.au/7850476>



Joel Bethell
02 9528 8738



Joshua Singer
02 9528 8738



INT: 73 m²
EXT: 6 m²



Scale in metres. Indicative only. Dimensions are approximate. All information contained herein is gathered from sources we believe to be reliable. However, we cannot guarantee its accuracy and interested persons should rely on their own enquiries.

20/108-110 Kiara Road, Miranda