



10/19-23 Durbar Avenue Kirrawee NSW

3 2 2

This full brick townhouse set at the rear of the complex embraces superb privacy and a bright rear north facing aspect. It's only a short walk to Kirrawee Public and GyMEA Technology High Schools while central to both GyMEA and Kirrawee shops and train stations.

- Spacious open living and dining zones easily flowing outdoors
- Private North facing grassed backyard
- Large under cover front courtyard
- Three sizeable bedrooms all with built in wardrobes, ceiling fans & air conditioning
- Generously proportioned master bedroom complete with ensuite.
- Main bathroom includes bath, shower & double vanity
- Brand new flooring upstairs
- Loads of storage

Price : \$ 1,315,000

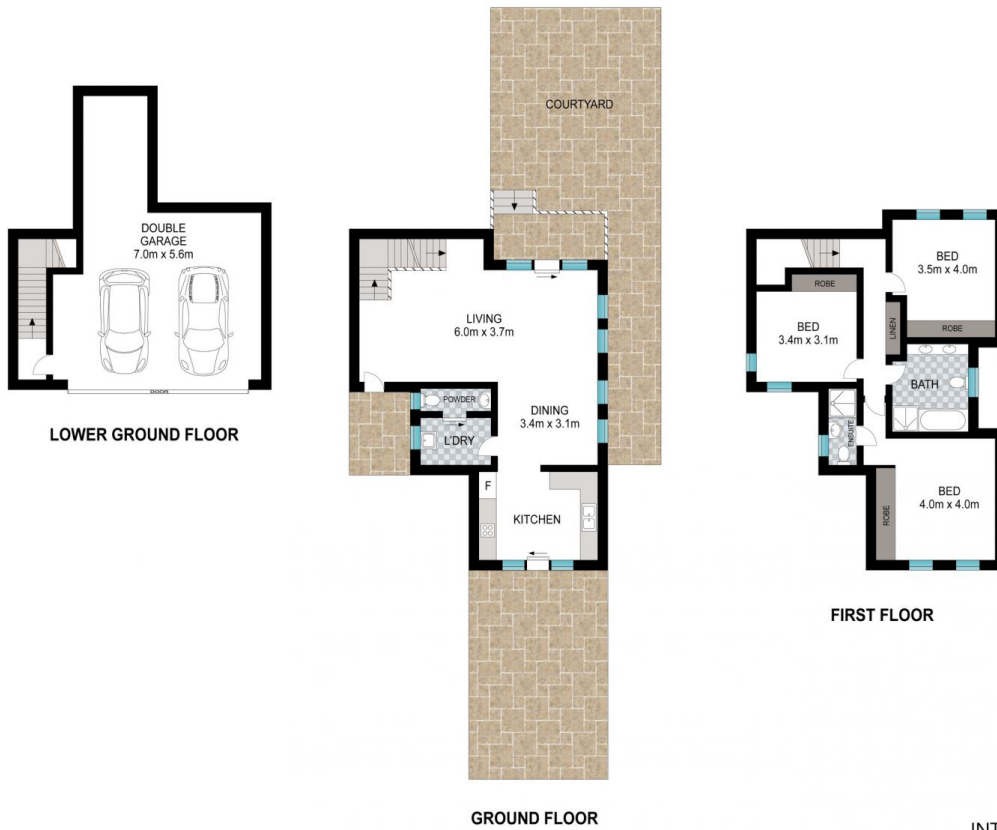
View : <https://www.singerresidential.com.au/7831681>



Joel Bethell
02 9528 8738



Joshua Singer
02 9528 8738



Scale in metres. Indicative only. Dimensions are approximate. All information contained herein is gathered from sources we believe to be reliable. However, we cannot guarantee its accuracy and interested persons should rely on their own enquiries.

INT: 186 m²
EXT: 90 m²



10/19-23 Durbar Avenue, Kirrawee