



7/147-151 President Avenue Miranda NSW

3 2 2

Set back in the rear of the complex, Extremely quite. Massive rear 144sqm back yard.

To view this property. Please park in Norfolk PI, Miranda

This boutique development offers modern luxury living. Each abode adopts a modern terrace style design with open-plan living areas which extend seamlessly to the private terrace courtyards and beautiful rear gardens that take full advantage of the sunny north-facing aspect.

Convenience at its best with internally accessible double secure side-by-side garage and storage/ 2nd living room. Added security includes a video intercom system and lifts access from the basement level. Surrounded by

[For full version visit the website](https://www.singerresidential.com.au)

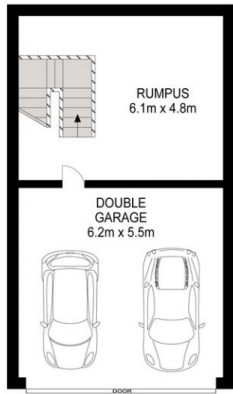
**Type** : Townhouse  
**Building Size** : 323 sqm  
**Land Size** : 144 sqm  
**View** : <https://www.singerresidential.com.au/7745908>



**Joshua Singer**  
02 9528 8738



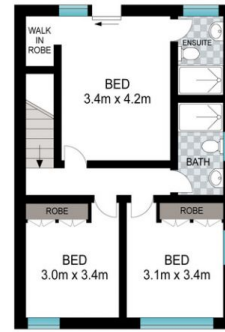
**Joel Bethell**  
0406274375



LOWER LEVEL



GROUND LEVEL



UPPER LEVEL



Scale in metres. Indicative only. Dimensions are approximate. All information contained herein is gathered from sources we believe to be reliable. However, we cannot guarantee its accuracy and interested persons should rely on their own enquiries.

INT: 190 m<sup>2</sup>  
EXT: 10 m<sup>2</sup>



7/147 President Avenue, Miranda