

2/289 The Boulevarde Miranda NSW

3  **2**  **2** 

Modern 3-bed townhouse designed by Couvaras Architects. Master bedrooms with ensuites, Miele kitchen, and ample storage. Sunlit living areas flow to alfresco courtyards. Double garage, pet-friendly. Conveniently near shops, schools, sports facilities. Experience contemporary comfort and style. A must See!

Building Size : 128 sqm
Land Size : 280 sqm
View : <https://www.singerresidential.com.au/7715579>

Key Features

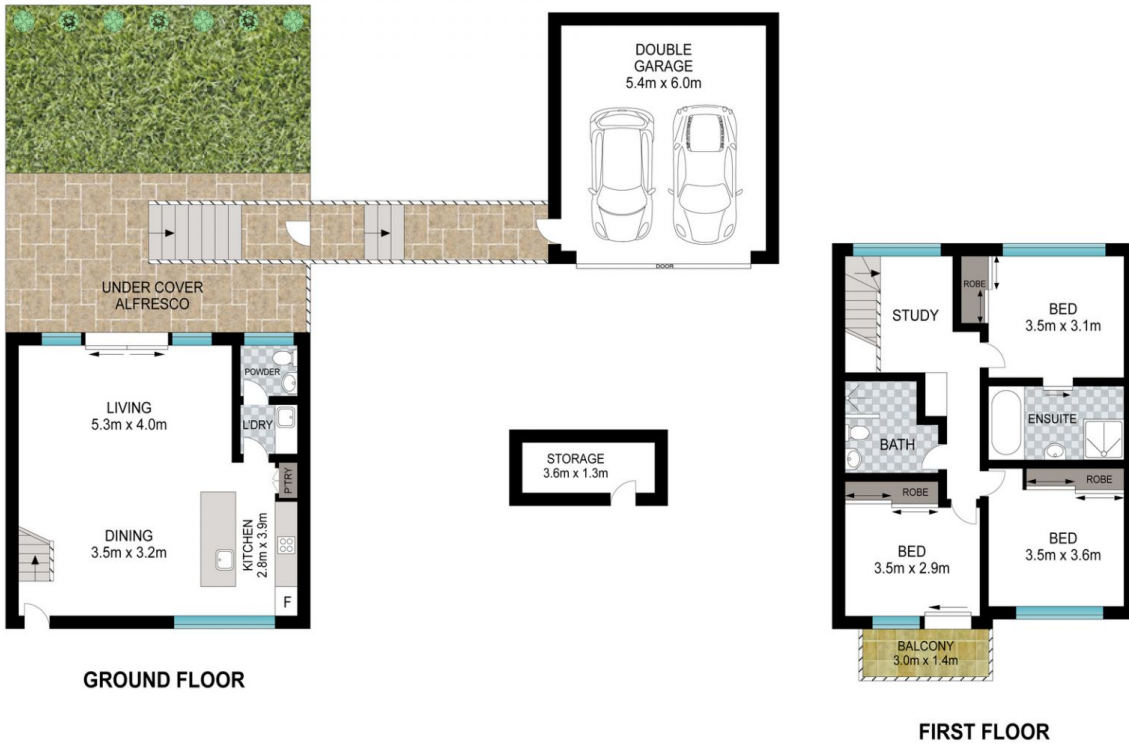
- Three bedrooms all with built-in robes
- Full-sized ensuites in master bedrooms
- Sleek designer kitchens with island benches and quality Miele appliances
- Designed by well-renowned Couvaras Architects
- North-facing aspect to living and alfresco entertaining courtyards
- Convenient double basement garaging with internal



Joshua Singer
02 9528 8738



Joel Bethell
02 9528 8738



INT: 125 m²
EXT: 45 m²



Scale in metres. Indicative only. Dimensions are approximate. All information contained herein is gathered from sources we believe to be reliable. However, we cannot guarantee its accuracy and interested persons should rely on their own enquiries.

2/289 The Boulevard, Miranda