



## 60 Woronora Crescent Como NSW

4 🏠 3 🚗 3 🚗

### ENTRY VIA KEELE STREET COMO

Located in the prestigious and highly sought-after pocket of Como West, you'll enjoy a peaceful retreat while being just moments away from schools, parks, shops, and public transport. Convenience and serenity come together seamlessly in this coveted location.

This property holds a remarkable story, as it hits the market for the first time in 30 years. It has been a cherished home filled with memories and is now ready to embrace a new chapter.

A meticulously maintained family home filled with natural light and a warm ambiance. The spacious layout provides ample room for relaxation and entertainment.

Outside, a private outdoor entertaining area awaits, perfect

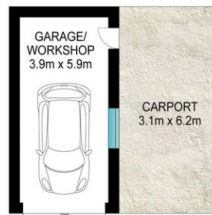
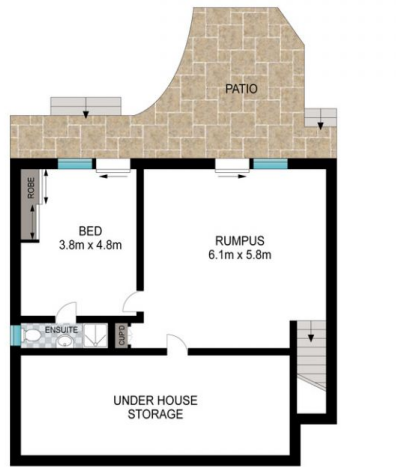
**Price** : \$ 1,600,000  
**Building Size** : 285 sqm  
**Land Size** : 594.4 sqm  
**View** : <https://www.singerresidential.com.au/7590013>



**Joshua Singer**  
02 9528 8738



**Joel Bethell**  
02 9528 8738



Scale in metres. Indicative only. Dimensions are approximate. All information contained herein is gathered from sources we believe to be reliable. However, we cannot guarantee its accuracy and interested persons should rely on their own enquiries.

INT: 240 m<sup>2</sup>  
EXT: 45 m<sup>2</sup>



60 Woronora Crescent, Como