



27 Borambil Place Oyster Bay NSW

4 3 8

Building and pest inspection available for download.

Recently updated, this stunning family home on an expansive block of 1075sqm features solid construction over two levels with a choice of living spaces, extra large bedrooms, and a granite kitchen with an adjacent dining area. The home office and generous rumpus room make working from home and family movie nights or playtime a breeze. The covered entertaining area overlooking the enormous level grassed yard is perfect for family gatherings or quiet evenings under the stars with easy access and space for a pool.

With brand new flooring throughout the property, providing a sleek and modern look. The property is located on the high side of a quiet cul-de-sac, offering privacy and serenity

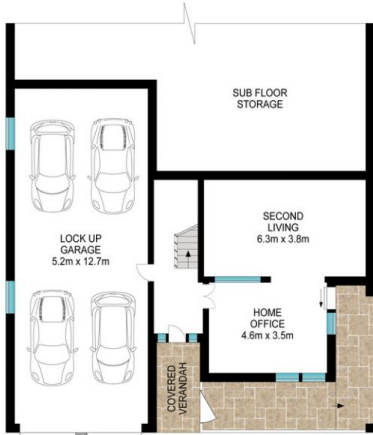
Price : \$ 2,232,000
Land Size : 1075 sqm
View : <https://www.singerresidential.com.au/7556993>



Joshua Singer
02 9528 8738



Joel Bethell
02 9528 8738



Scale in metres. Indicative only. Dimensions are approximate. All information contained herein is gathered from sources we believe to be reliable. However, we cannot guarantee its accuracy and interested persons should rely on their own enquiries.

INT: 300 m²
EXT: 95 m²



27 Borambil Place, Oyster Bay