



Miranda

3 2 3

This near-new, Metrickon-designed duplex is as spacious as a house and surprisingly quiet. Flaunting a versatile and contemporary design to suit a range of lifestyle needs.

- Three generous bedrooms equipped with built-in wardrobes
- Master with en-suite, walk-in wardrobes.
- A choice of spacious formal and informal living areas
- Caesar stone kitchen, stainless steel appliances with butler's pantry.
- Indoor/outdoor entertaining area with plenty of cover.
- Level grassed yard with easy to maintain gardens
- Ducted air condition and security system
- Single lock-up garage and plenty of off-street parking

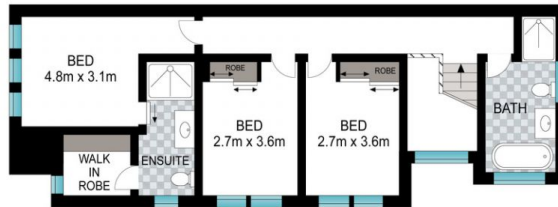
Available: 22/5/2021

Lease: 12 months +

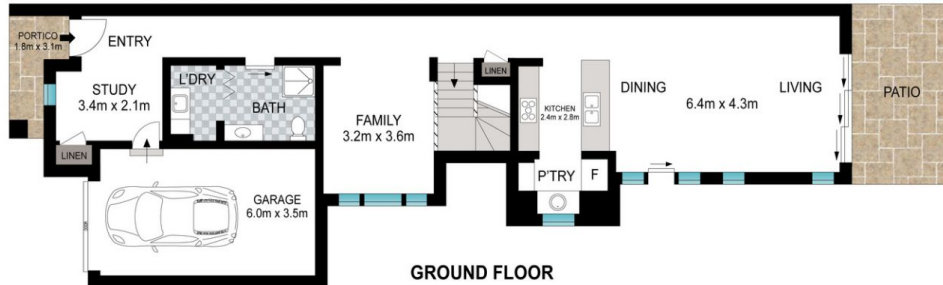
View : <https://www.singerresidential.com.au/7297273>



Trisha Singer
0405143152



FIRST FLOOR



GROUND FLOOR



SITEPLAN

0 1 2 3 4 5

Scale in meters. Indicative only. Dimensions are approximate. All information contained herein is gathered from sources we believe to be reliable. However, we cannot guarantee its accuracy and interested persons should rely on their own enquiries.

INT: 162 m²
EXT: 5 m²



238B President Avenue, Miranda