



4/12-16 Durbar Avenue Kirrawee NSW

3 2 2

Features include:

- Spacious and light-filled open plan living and dining area
- Chic kitchen with stone benchtops, glass splashbacks and fitted with - Miele appliances

**Price** : \$ 1,200,000  
**Building Size** : 161 sqm  
**Land Size** : 178 sqm  
**View** : <https://www.singerresidential.com.au/6356524>

Floors

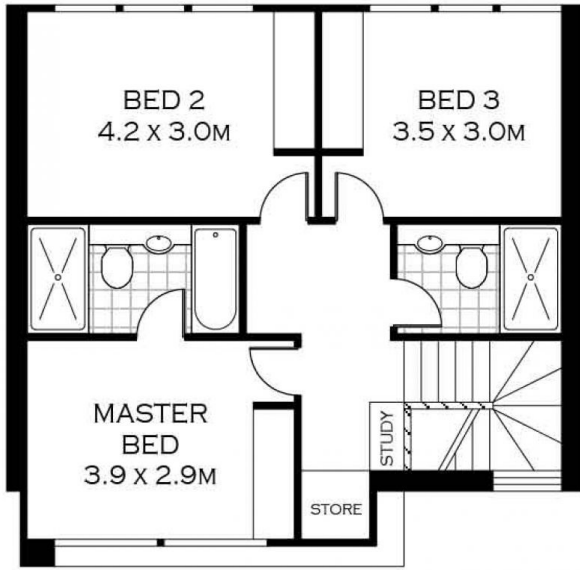
- Private paved double courtyard, perfect for entertaining all year round
- Ducted reverse cycle air conditioning and gas boosted hot water solar systems
- The abundance of storage and all come with a double lock-up garage
- Walking distance to both Gymea and Kirrawee Train



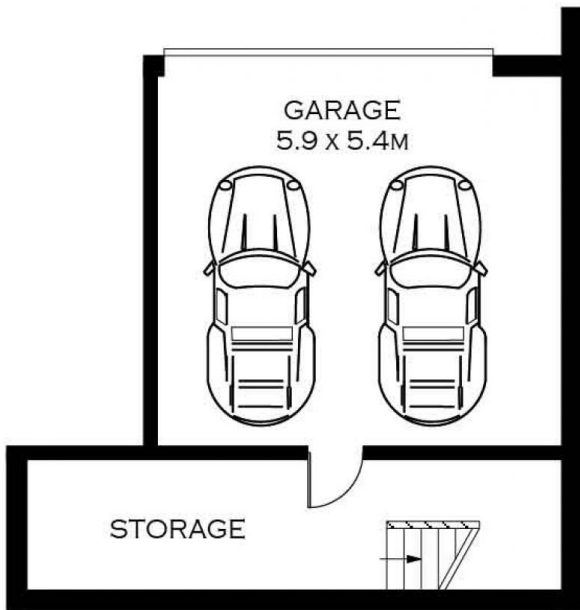
**Joshua Singer**  
02 9528 8738



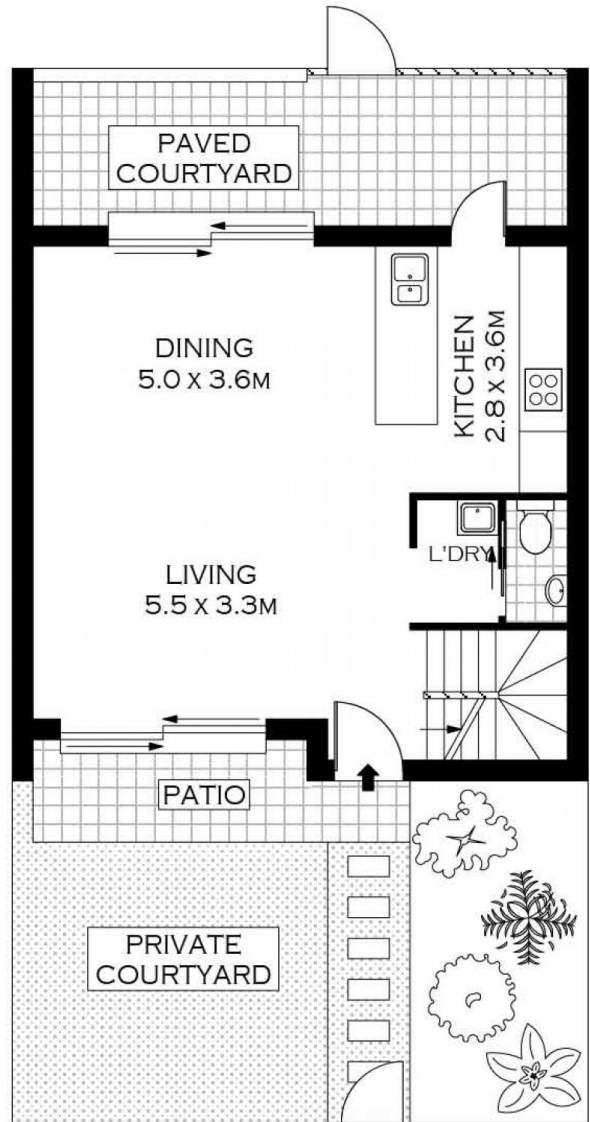
**Joel Bethell**  
02 9528 8738



FIRST FLOOR



LOWER GROUND FLOOR



GROUND FLOOR



PLANS SHOWN ONLY INDICATIVE OF LAYOUT. DIMENSIONS ARE APPROXIMATE.  
Floor plans by [www.remaustralia.com](http://www.remaustralia.com)  
Ref. No: 13952

INT : 161.04M<sup>2</sup>



UNIT 1,2,3,4, 12-16 DURBAR AVENUE

KIRRAWEE