



9/23-25 Myra Road Dulwich Hill NSW

2 **1** **1**

This apartment will be perfect for those who wish to be close to Sydney CBD whilst still enjoying a village lifestyle. With plenty of natural light and a perfect floor plan, this well presented 2-bedroom apartment set on the top floor of a classic security apartment dwelling and with a sought after address that places Dulwich Grove light rail and train stations, the local village hub of cafes, eateries, and shops, all within easy stroll.

Features

- * 2 Large Bedrooms with Built-ins
- * An updated eat-in kitchen
- * Lovely bathroom with separate bath-tub and shower
- * Large sunny balcony with views
- * Spacious open plan living area with air-con
- * Internal Laundry

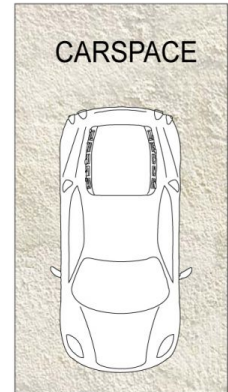
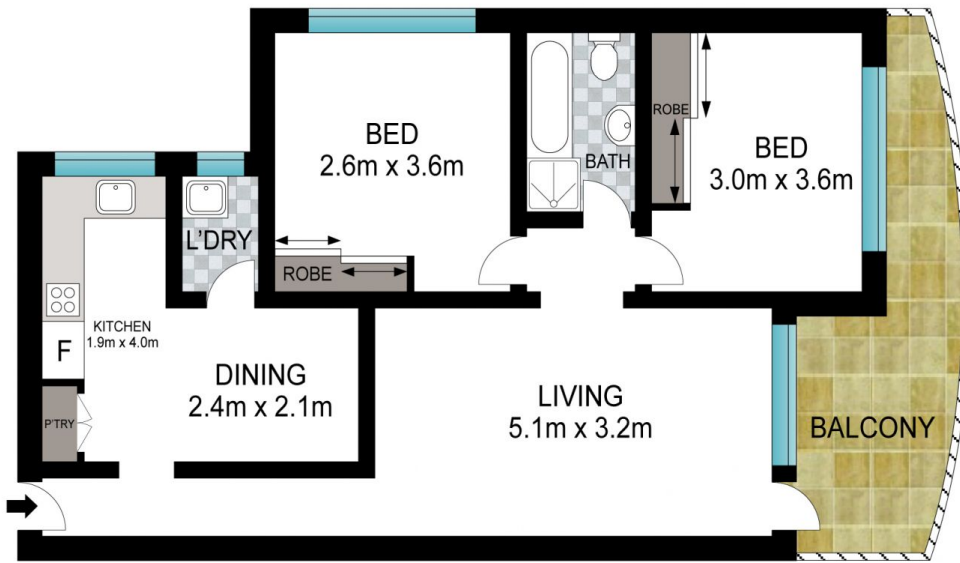
Price : \$ 700,000
Building Size : 73 sqm
View : <https://www.singerresidential.com.au/5712982>



Izabela Varnavelias
0416 102 930



Joshua Singer
02 9528 8738



INT: 70 m²
EXT: 10 m²



Scale in metres. Indicative only. Dimensions are approximate. All information contained herein is gathered from sources we believe to be reliable. However, we cannot guarantee its accuracy and interested persons should rely on their own enquiries.

9/23-25 Myra Road, Dulwich Hill