



6/289-291 The Boulevard Miranda NSW

3  2  2 

- three bedrooms all with built-in robes
- full-sized ensuites to master bedrooms
- sleek designer kitchens with island bench and quality Miele appliances
- designed by well renowned Couvaras Architects
- North facing aspect to living and alfresco entertaining courtyards
- convenient double basement garaging with internal access
- ample storage solutions throughout
- pet friendly
- easy access to major shopping complex, schools and sporting facilities
- Smart system wired throughout

Strata: \$473.50 per Qtr

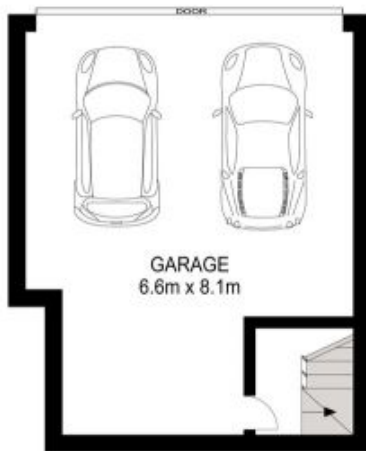
Price : \$ 1,025,000
Building Size : 181 sqm
Land Size : 290 sqm
View : <https://www.singerresidential.com.au/5712980>



Joshua Singer
02 9528 8738



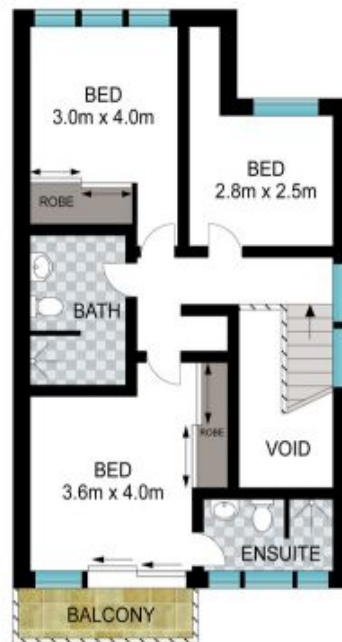
Trisha Singer
0405143152



BASEMENT



GROUND FLOOR



FIRST FLOOR



SITE PLAN

0 1 2 3 4 5

Scale in metres. Indicative only. Dimensions are approximate. All information contained herein is gathered from sources we believe to be reliable. However, we cannot guarantee its accuracy and interested persons should rely on their own enquiries.

INT: 166 m²
EXT: 3 m²



6/289 The Boulevard, Miranda