



## 4/25 Orpington Street Ashfield NSW

2 1 1

Located in one of Ashfield's most sought after streets, this elevated ground floor featuring 2 bedrooms all with built-in robes, offers the entry point to the most popular Inner West area.

This unit is the perfect for first home buyers, investors and buyers looking to downsize

### Key Features:

- Two good sized bedrooms with built-in robes
- Open plan living and dining area with natural light
- Modern kitchen with gas cooking, stainless steel appliances and ample cupboard space
- Renovated bathroom with bathtub to relax & unwind
- Car space at the rear of the block
- Small private complex double brick unit
- Short stroll to Ashfield Station, Mall, schools and Ashfield Park, City-bound buses and Ashfield Aquatic Centre

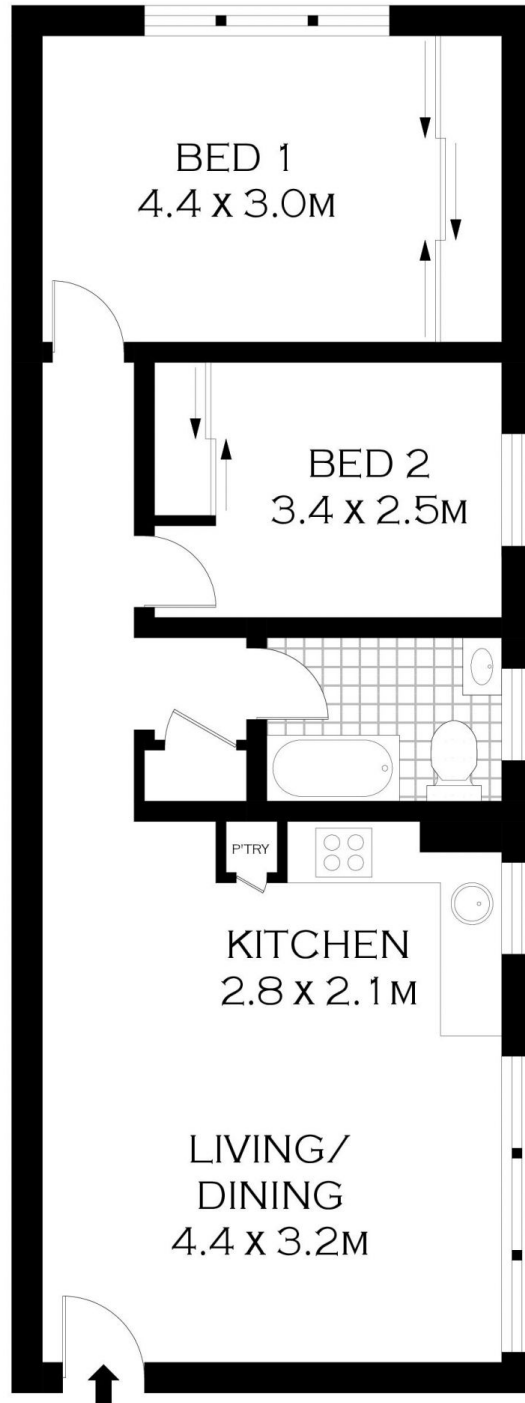
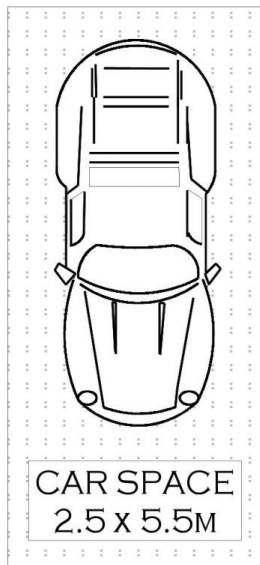
**Price** : \$ 600,000  
**Building Size** : 63 sqm  
**View** : <https://www.singerresidential.com.au/5712966>



**Izabela Varnavelias**  
0416 102 930



**Joshua Singer**  
02 9528 8738



## GROUND FLOOR



PLANS SHOWN ONLY INDICATIVE OF LAYOUT. DIMENSIONS ARE APPROXIMATE.  
Floor plans by [www.remaustralia.com](http://www.remaustralia.com)  
Ref. No: 13969

INT : 58.50M<sup>2</sup>



4/25 ORPINGTON STREET

ASHFIELD