

# SINGER

RESIDENTIAL



## Miranda

2  2  2 

Come home to a peaceful and glamorous retreat offering a seamless flow of private indoor-outdoor living centred around breathtaking resort-style amenities. Set amongst lush sub-tropical landscapes and tall swaying palms, Palisade is a sanctuary where nature, leisure and vibrant cosmopolitan life unite.

Elegant architecture makes a landmark statement. Beautifully spacious, newly completed one, two and three-bedroom homes are infused with naturally stylish living. Experience the ritual of a morning swim in your spectacular turquoise pool. Relax with friends over brunch on the day beds in between dips, or enjoy a fine glass of wine at sunset. Make your home at Palisade. Where every day feels like a vacation.

[For full version visit the website](https://www.singerresidential.com.au)

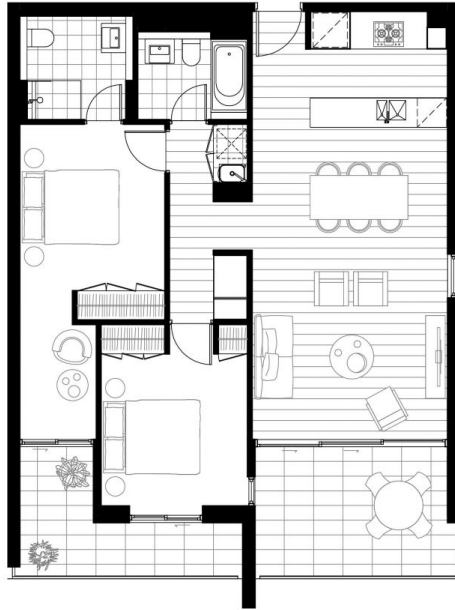
**Type** : Apartment  
**Price** : For sale  
**Building Size** : 98 sqm  
**View** : <https://www.singerresidential.com.au/5712962>



**Joshua Singer**  
02 9528 8738



**Trisha Singer**  
0405143152



ISSUED: 23/05/2016

RESORT LUXURY  
**PALISADE**  
 MIRANDA  
 RESIDENCES

**PACIFIC**  
 APARTMENTS

**APARTMENT BB.404**  
 TWO BEDROOM

INTERNAL AREA:	80 m <sup>2</sup>
EXTERNAL AREA:	18 m <sup>2</sup>
TOTAL AREA:	98 m <sup>2</sup>

**1800 753 627**  
[palisademiranda.com.au](http://palisademiranda.com.au)

All apartments subject to contract and availability. Images showing the building, fixtures and fittings are conceptual, generated prior to construction and illustrative only. Dimensions, layouts, finishes and specifications are subject to change and may differ from those shown. Views differ between apartments. Furniture and plantings are for decorative purposes and are not included.

galileo | Laing+Simmons | **CBRE**