

2/700 Kingsway Gymea NSW

3 1 1

Entrance VIA Paddison Ave.

Offering a fantastic opportunity to enjoy a low maintenance lifestyle. This well presented and fully renovated townhouse blends generous proportions with light-filled interiors and open plan living.

- Family-sized townhouse set in a boutique complex of just three
- Spacious open plan living and dining flowing freely to outdoor living
- Contemporary kitchen featuring granite benchtops, gas cooktop, quality stainless steel appliances, and ample storage
- Three great sized bedrooms, all appointed with mirrored built-in wardrobes
- North facing with a grassed alfresco courtyard and paved

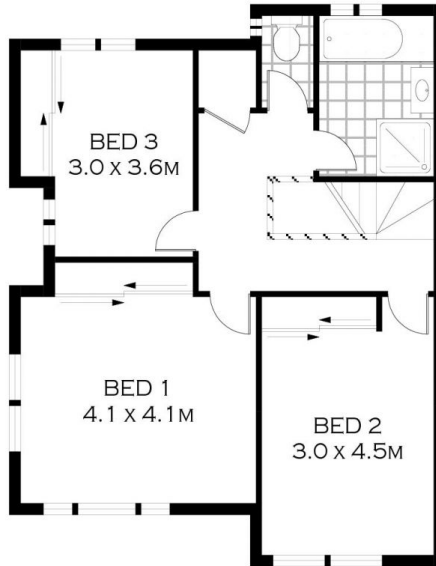
Building Size : 120.5 sqm
View : <https://www.singerresidential.com.au/5712952>



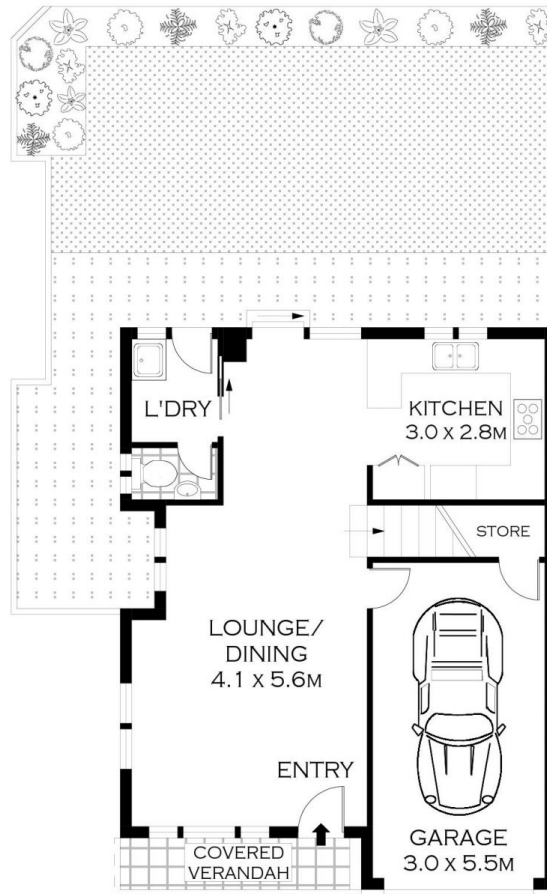
Joshua Singer
02 9528 8738



Trisha Singer
0405143152



UPPER LEVEL



LOWER LEVEL



SCALE (METRES)

PLANS SHOWN ONLY INDICATIVE OF LAYOUT. DIMENSIONS ARE APPROXIMATE.
 Floor plans by www.remaustralia.com
 Ref. No: 13618

INT : 122.76M²



2/700 KINGSWAY

GYMEA