



## 19 High Street Cronulla NSW

4 2 4

PROPERTY NEEDS TO BE SOLD on the 13th of April if not sold prior.

Building and Pest inspection Available for download

Size matters. Positioned in a prime location of Cronulla is this beautiful 4 Bedroom, North facing family home offering everything a growing family requires.

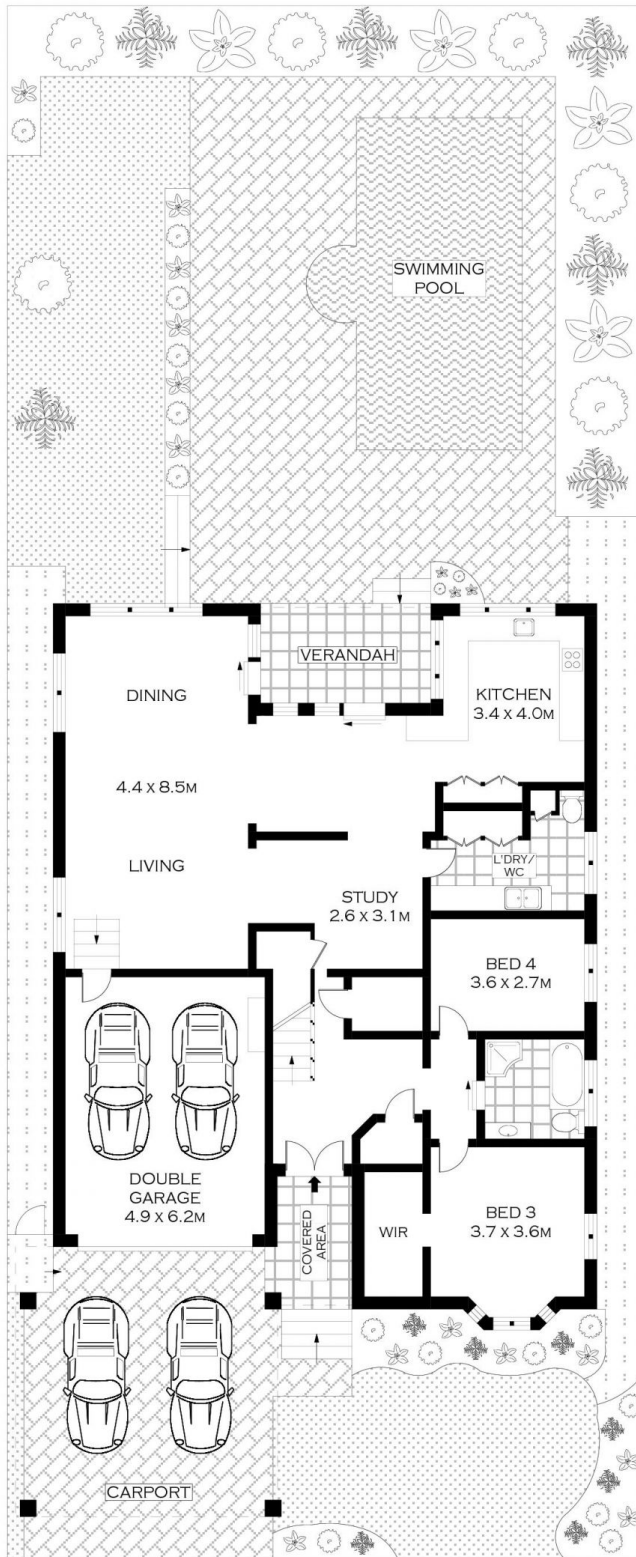
Within walking distance to the shire's wetlands, fishing grounds and nature reserves, this property has everything for the discerning buyer. Located 10 minutes stroll to Wanda beach, 5 minute walk to Woolooware Train Station, North Woolooware village shops, Woolooware golf course, 10-minute walk to Shark Park and situated in the catchment area for Woolooware high and Cronulla high.

Key Features

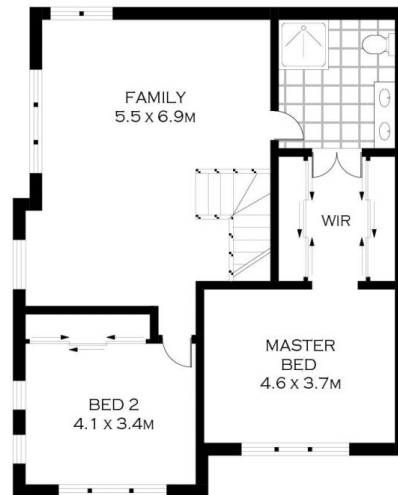
**Price** : \$ 1,725,000  
**Building Size** : 272.2 sqm  
**Land Size** : 561 sqm  
**View** : <https://www.singerresidential.com.au/5712939>



**Joshua Singer**  
02 9528 8738



GROUND FLOOR



FIRST FLOOR



PLANS SHOWN ONLY INDICATIVE OF LAYOUT. DIMENSIONS ARE APPROXIMATE.  
 Floor plans by [www.remaustralia.com](http://www.remaustralia.com)  
 Ref. No: 13233

INT : 272.68M<sup>2</sup>



19 HIGH STREET

CRONULLA