



## 9B Edinburgh Crescent Woollooware NSW

3 1 3

This double brick, fully renovated 3-bedroom home offers peaceful contemporary living in a coveted oceanside locale. Embodying renowned local architect Wayne Bentley's passive design principles, the serene stand-alone residence uses natural light and air flow to enhance quality of life and promote well-being.

Featuring oversized windows, high ceilings with fans, superb designer décor and stunning finishes throughout, the home balances three generous bedrooms, resort-quality bathroom, chef's kitchen, laundry and a showpiece open plan living/dining zone with alfresco entertaining areas bathed in ocean breezes. 5 minutes to the beach and close to all amenities, this Stunning home welcomes discerning first home buyers, families, beach-loving downsizers and investors.

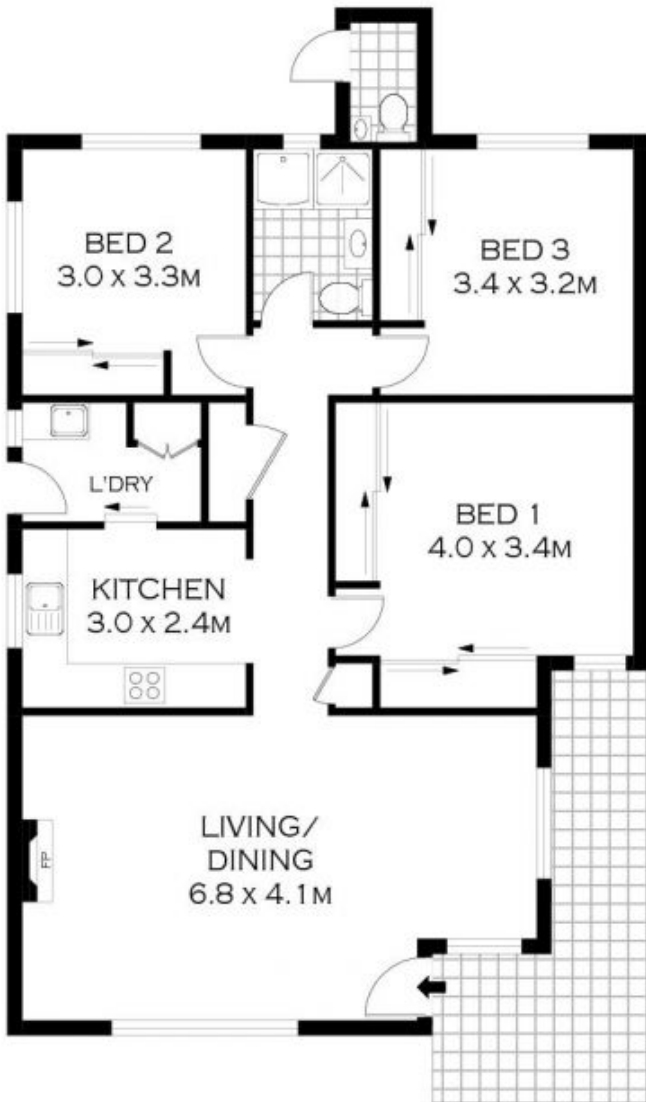
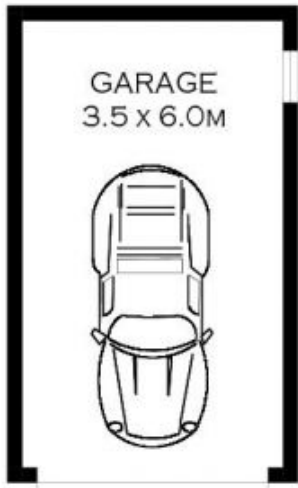
**Price** : \$ 1,200,000  
**Land Size** : 332 sqm  
**View** : <https://www.singerresidential.com.au/5712933>



**Joshua Singer**  
02 9528 8738



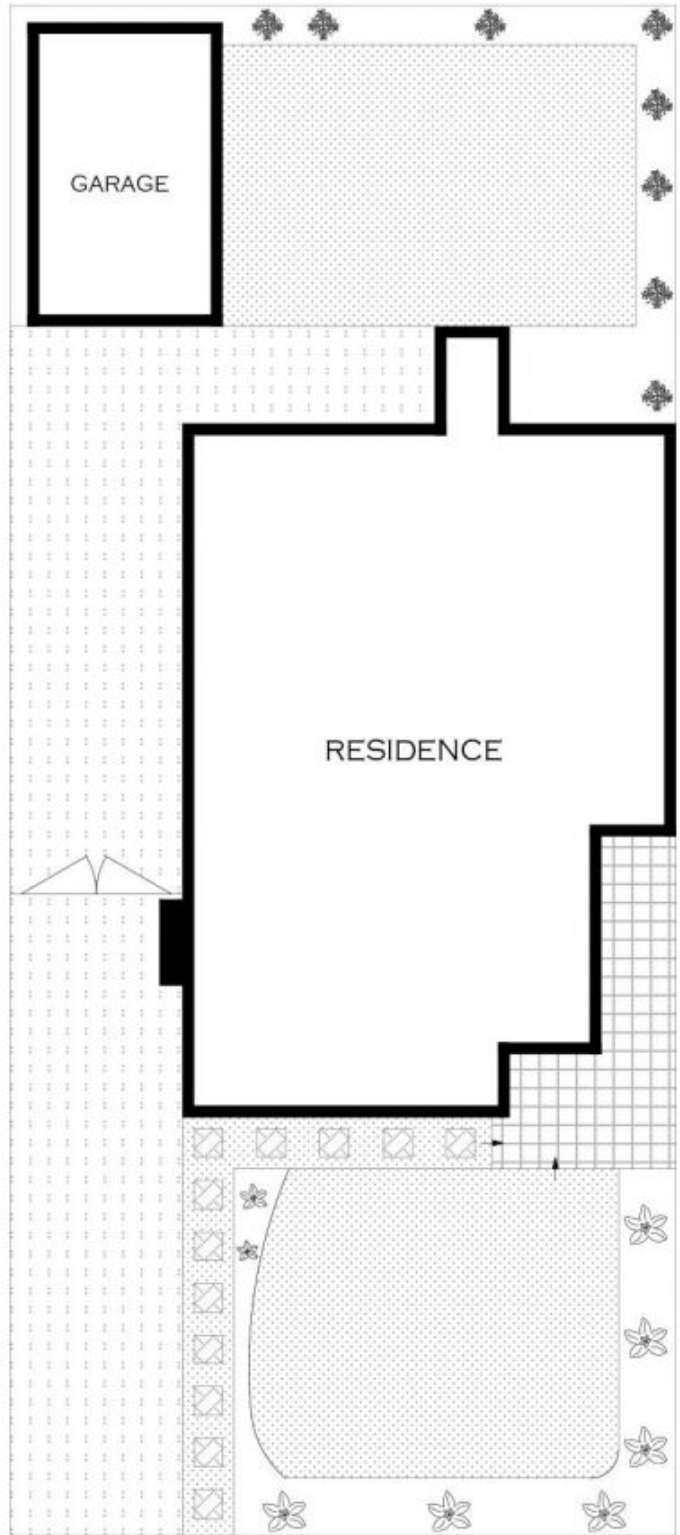
**Trisha Singer**  
0405143152



**GROUND FLOOR**



PLANS SHOWN ONLY INDICATIVE OF LAYOUT. DIMENSIONS ARE APPROXIMATE.  
Floor plans by [www.remaustralia.com](http://www.remaustralia.com)  
Ref. No: 13088



**SITE PLAN**  
(NOT TO SCALE)

